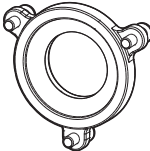
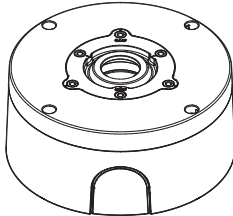


Bullet Back Box

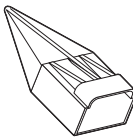
SBO-140WW



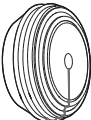
Package



Cover cable



Cap installer



Gasket



3 hole Cable Bushing



4 hole Cable Bushing

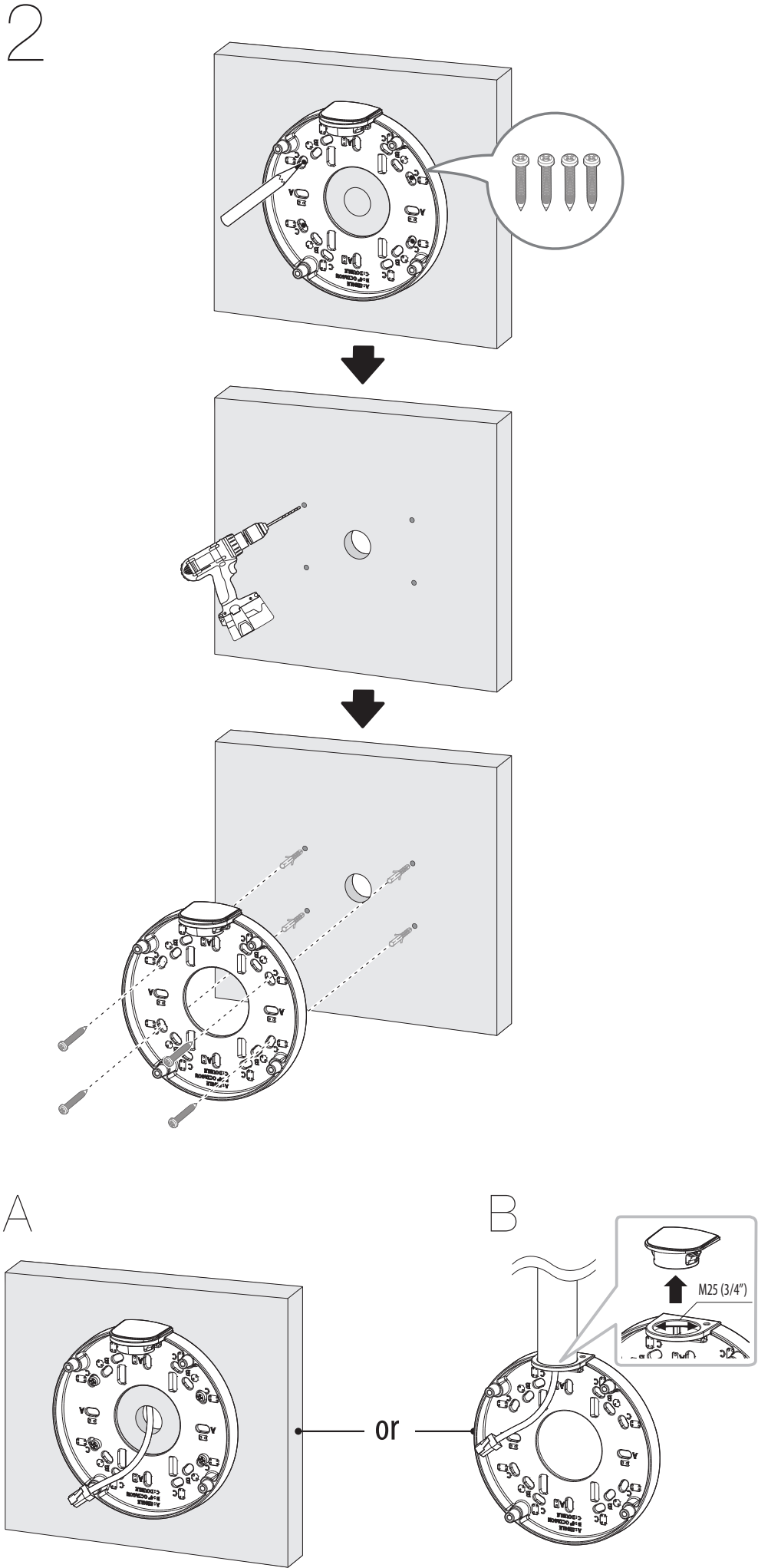
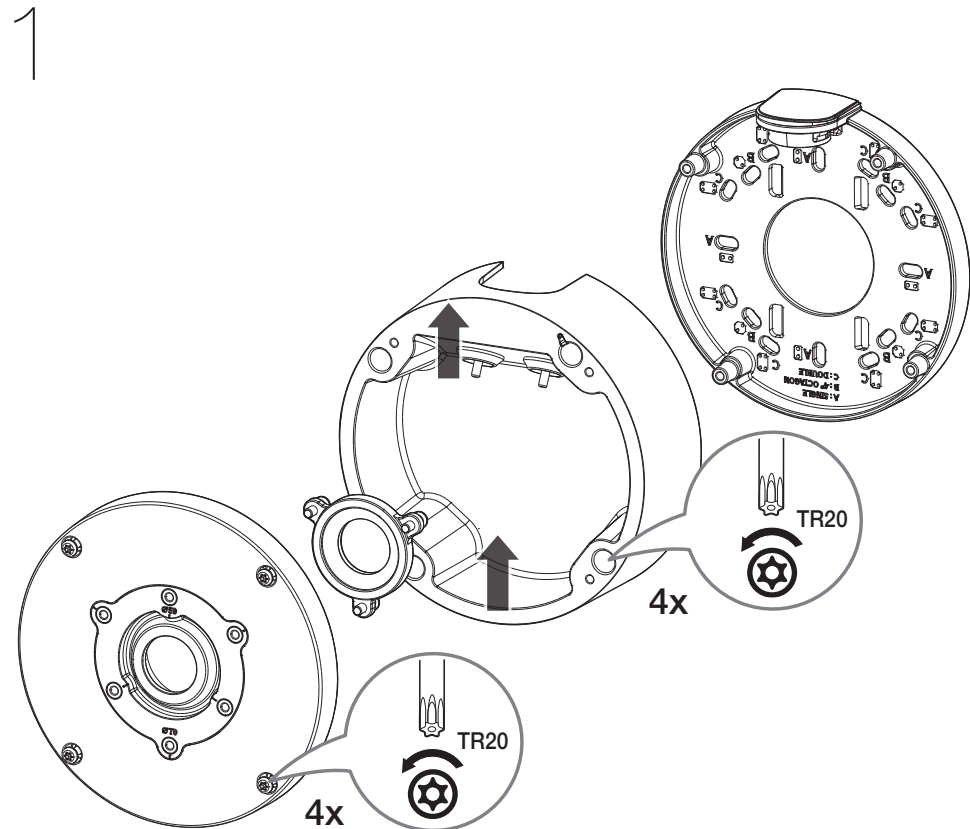


Screws (3EA)

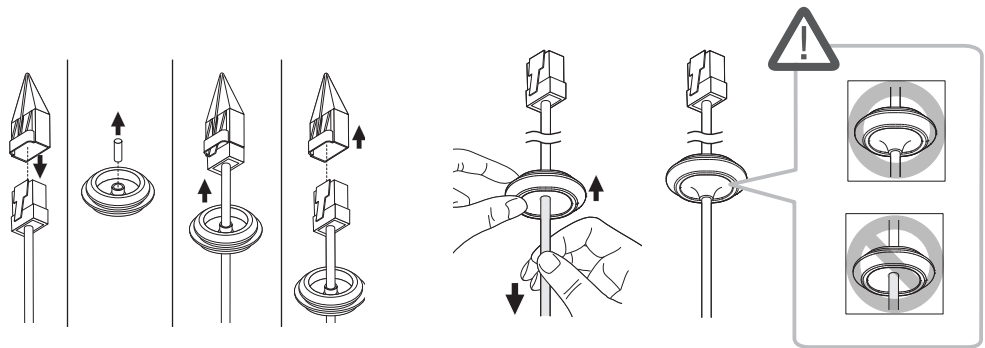
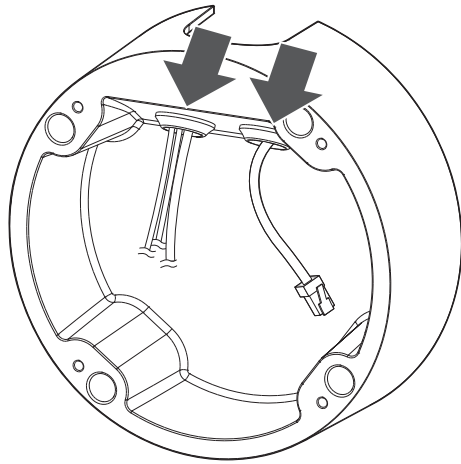
Installation Precautions

- Make sure that the installation place can endure at least 4 times of the total weight of the installation structure.
- Use the provided screws to install the Mount and camera.
- When installing the product outdoors, use interlocking devices made of stainless steel.

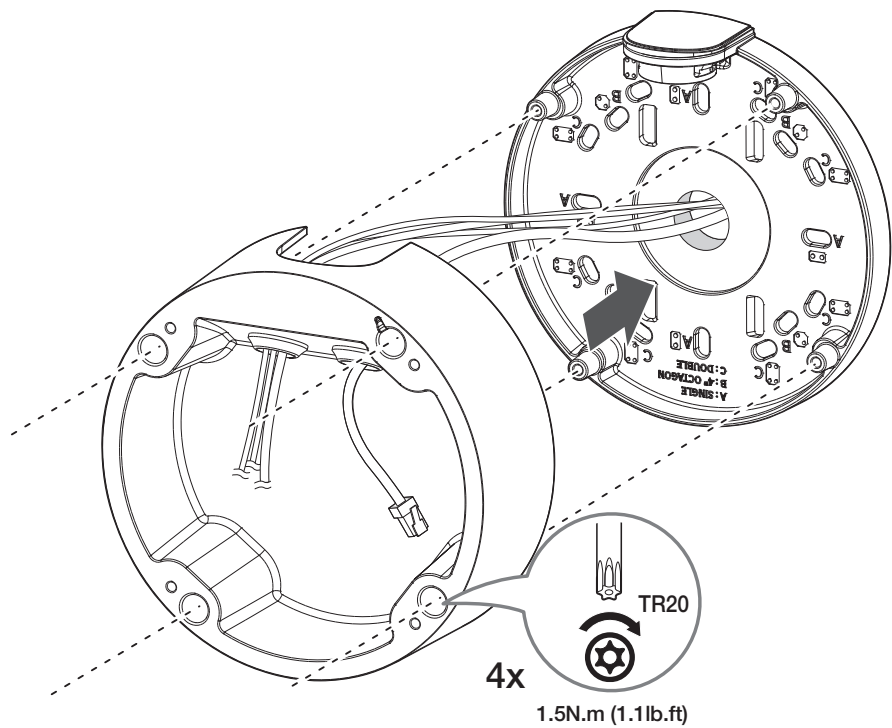
Installation



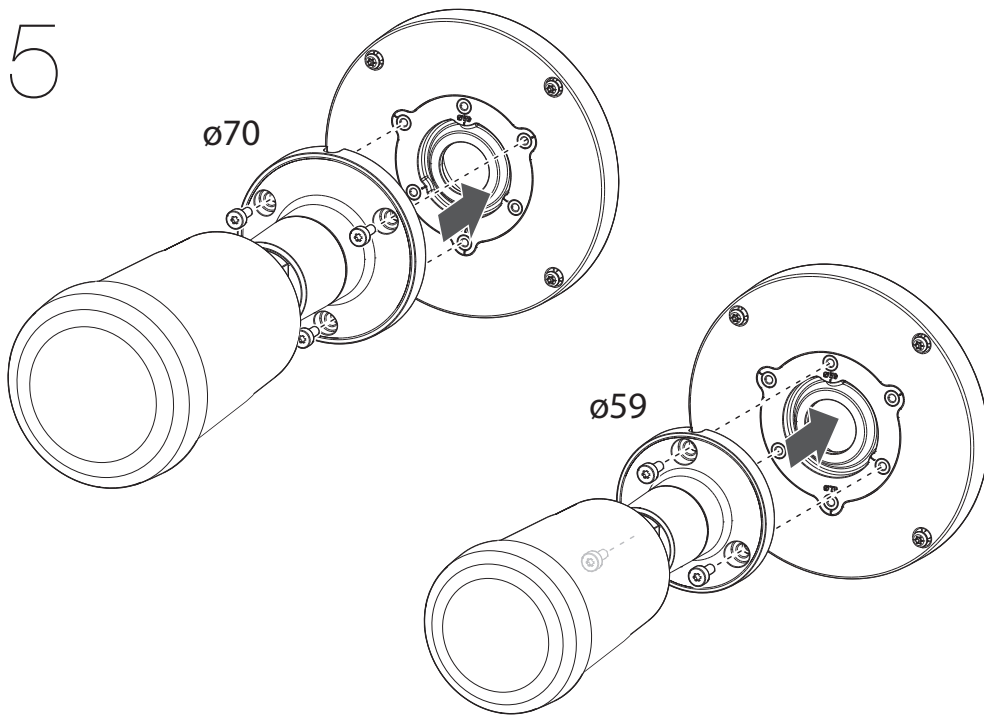
3



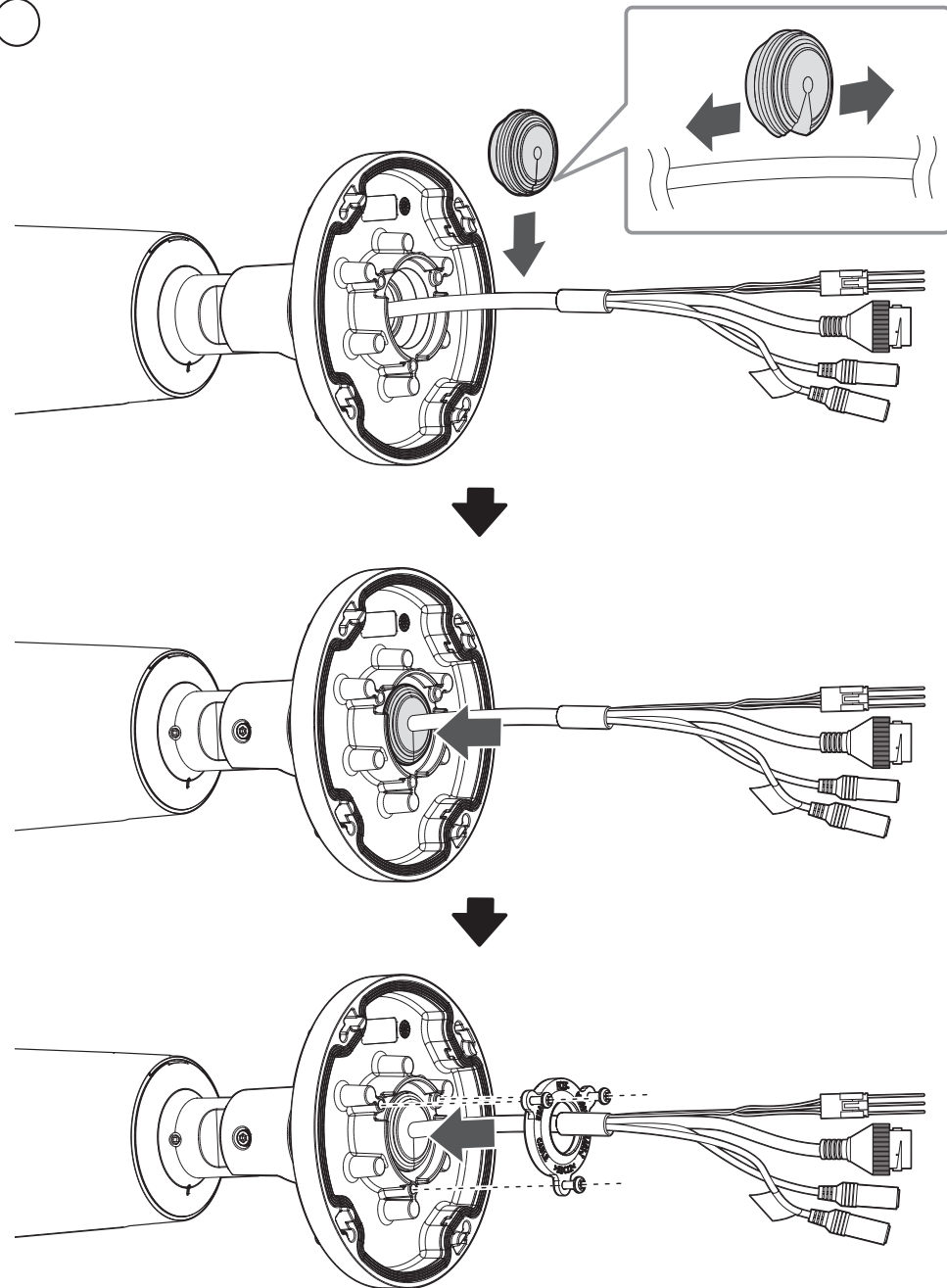
4



5



6



7

